




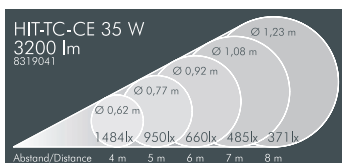
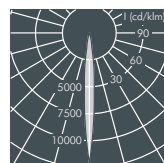
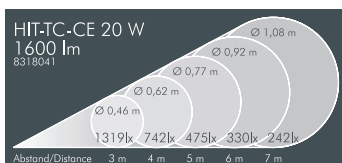
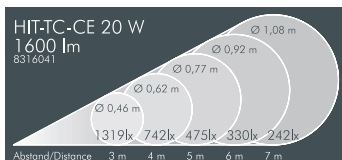
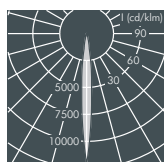
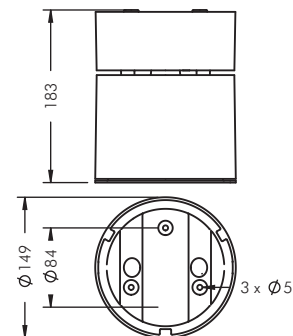
The series of surface-mounted downlights for miniature metal halide lamps and LEDs are compact in size and very shallow. Equipped with either fixed or gimbal mounted adjustable reflectors and with a range of different distributions, these products can be adapted to suit a wide range of lighting applications. The control gear is situated in a separate compartment for optimal thermal protection. In the case of the LED product with fixed optics, this compartment is not required, resulting in an extremely shallow housing. The range of accessories includes optical lenses for beam control and anti-glare louvres.

IP rated ceiling-mounted luminaires can be installed under-canopy to provide a sophisticated lighting effect for entrances.



Surface-mounted downlight Narrow beam

For ceramic metal halide lamps (HIT-TC-CE), protection class I, IP65 , IK08 die cast aluminium housing, polyester powder coated, rotationally symmetrical aluminium reflector, all exterior steel parts are stainless steel, tempered safety glass, silicon gasket, housing locked with a grub screw, ceiling mount: 3 drilled holes \varnothing 5 mm on circular pitch \varnothing 84 mm, cable entry \varnothing 7-10 mm recessed or surface mounted cable, integral electronic ballast, supplied without lamp



Surface-mounted downlight 20 W, narrow beam

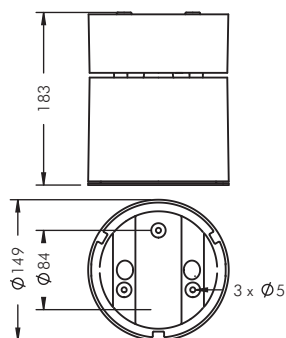
Part number	Colour	Lamp	Lampholder	Weight	Half beam angle γ
8 316 041 009	black	Philips CDM-Tm 20 W	PGJ5	2.1 kg	10°
8 316 061 009	white				
8 316 051 009	silver grey				

Part number	Colour	Lamp	Lampholder	Weight	Half beam angle γ
8 318 041 009	black	General Electric	GU6.5	2.1 kg	10°
8 318 061 009	white	CMH 20 W /			
8 318 051 009	silver grey	Osram HCI-TF 20 W			


Surface-mounted downlight 35 W, narrow beam

Part number	Colour	Lamp	Lampholder	Weight	Half beam angle γ
8 319 041 009	black	General Electric	GU6.5	2.1 kg	10°
8 319 061 009	white	CMH 35 W /			
8 319 051 009	silver grey	Osram HCI-TF 35 W			





Surface-mounted downlight Medium wide beam

For ceramic metal halide lamps (HIT-TC-CE), protection class I, IP65 , IK08 die cast aluminium housing, polyester powder coated, rotationally symmetrical aluminium reflector, all exterior steel parts are stainless steel, tempered safety glass, silicon gasket, housing locked with a grub screw, ceiling mount: 3 drilled holes \varnothing 5 mm on circular pitch \varnothing 84 mm, cable entry \varnothing 7-10 mm recessed or surface mounted cable, integral electronic ballast, supplied without lamp

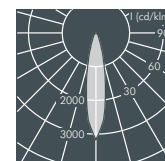
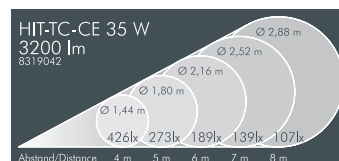
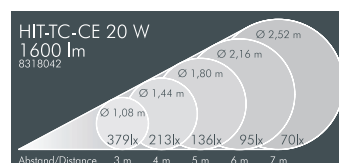
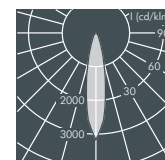
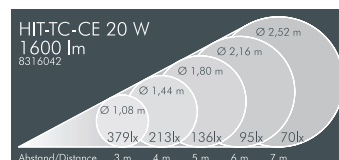
Surface-mounted downlight 20 W, medium wide beam

Part number	Colour	Lamp	Lampholder	Weight	Half beam angle γ
8 316 042 009	black	Philips CDM-Tm 20 W	PGJ5	2.1 kg	20°
8 316 062 009	white				
8 316 052 009	silver grey				

Part number	Colour	Lamp	Lampholder	Weight	Half beam angle γ
8 318 042 009	black	General Electric	GU6.5	2.1 kg	20°
8 318 062 009	white	CMH 20 W /			
8 318 052 009	silver grey	Osram HCHT 20 W			

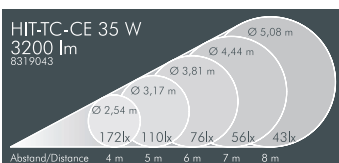
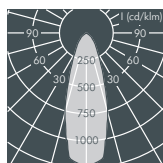
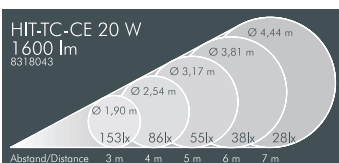
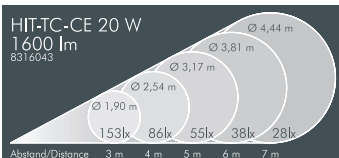
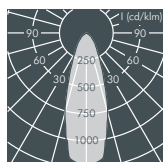
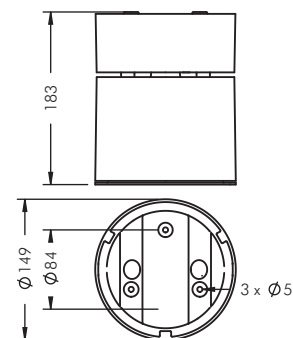
Surface-mounted downlight 35 W, medium wide beam

Part number	Colour	Lamp	Lampholder	Weight	Half beam angle γ
8 319 042 009	black	General Electric	GU6.5	2.1 kg	20°
8 319 062 009	white				
8 319 052 009	silver grey				



Surface-mounted downlight Wide beam

For ceramic metal halide lamps (HIT-TC-CE), protection class I, IP65 \blacklozenge \blacktriangle \blacktriangle , IK08 die cast aluminium housing, polyester powder coated, rotationally symmetrical aluminium reflector, all exterior steel parts are stainless steel, tempered safety glass, silicon gasket, housing locked with a grub screw, ceiling mount: 3 drilled holes \varnothing 5 mm on circular pitch \varnothing 84 mm, cable entry \varnothing 7-10 mm recessed or surface mounted cable, integral electronic ballast, supplied without lamp



Surface-mounted downlight 20 W, wide beam

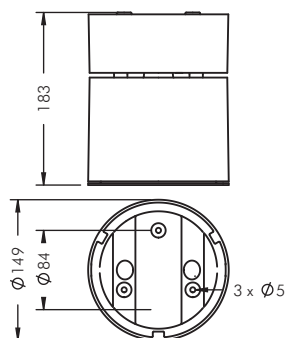
Part number	Colour	Lamp	Lampholder	Weight	Half beam angle γ
8 316 043 009	black	Philips CDM-Tm 20 W	PGJ5	2.1 kg	35°
8 316 063 009	white				
8 316 053 009	silver grey				

Part number	Colour	Lamp	Lampholder	Weight	Half beam angle γ
8 318 043 009	black	General Electric	GU6.5	2.1 kg	35°
8 318 063 009	white	CMH 20 W /			
8 318 053 009	silver grey	Osram HCLTF 20 W			

Surface-mounted downlight 35 W, wide beam

Part number	Colour	Lamp	Lampholder	Weight	Half beam angle γ
8 319 043 009	black	General Electric	GU6.5	2.1 kg	35°
8 319 063 009	white	CMH 35 W /			
8 319 053 009	silver grey	Osram HCLTF 35 W			





Surface-mounted downlight Gimbal mounted reflector narrow beam

For ceramic metal halide lamps (HIT-TC-CE), protection class I, IP65 $\diamond \triangle \triangle$, IK08 die cast aluminium housing, polyester powder coated, gimbal mounted rotationally symmetrical aluminium reflector, adjustment range 0-15°, all exterior steel parts are stainless steel, tempered safety glass, silicon gasket, housing locked with a grub screw, ceiling mount: 3 drilled holes \varnothing 5 mm on circular pitch \varnothing 84 mm, cable entry \varnothing 7-10 mm recessed or surface mounted cable, integral electronic ballast, supplied without lamp

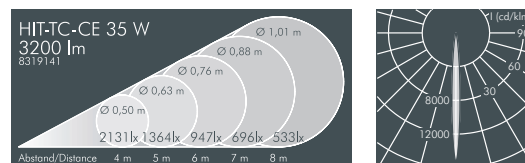
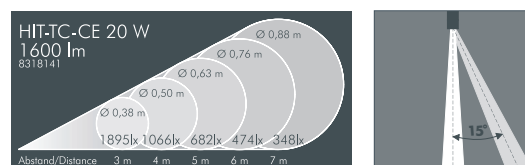
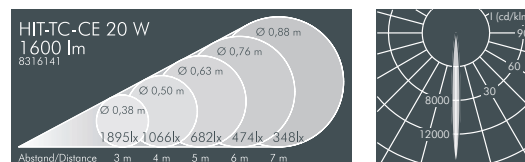
Surface-mounted downlight 20 W, gimbal mounted, narrow beam

Part number	Colour	Lamp	Lampholder	Weight	Half beam angle γ
8 316 141 009	black	Philips CDM-Tm 20 W	PGJ5	2.1 kg	7°
8 316 161 009	white				
8 316 151 009	silver grey				

Part number	Colour	Lamp	Lampholder	Weight	Half beam angle γ
8 318 141 009	black	General Electric	GU6.5	2.1 kg	7°
8 318 161 009	white	CMH 20 W /			
8 318 151 009	silver grey	Osram HCHT 20 W			

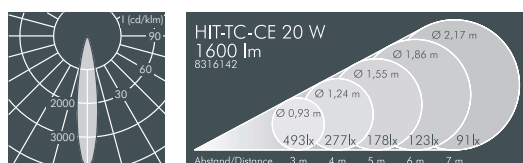
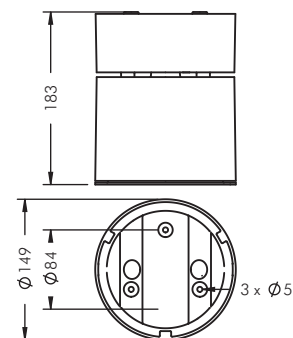
Surface-mounted downlight 35 W, gimbal mounted, narrow beam

Part number	Colour	Lamp	Lampholder	Weight	Half beam angle γ
8 319 141 009	black	General Electric	GU6.5	2.1 kg	9°
8 319 161 009	white	CMH 35 W /			
8 319 151 009	silver grey	Osram HCHT 35 W			

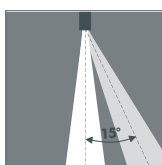


Surface-mounted downlight Gimbal mounted reflector medium wide beam

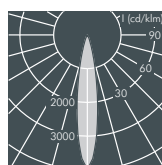
For ceramic metal halide lamps (HIT-TC-CE), protection class I, IP65 \blacklozenge \blacktriangle \blacktriangle , IK08 die cast aluminium housing, polyester powder coated, gimbal mounted rotationally symmetrical aluminium reflector, adjustment range 0-15°, all exterior steel parts are stainless steel, tempered safety glass, silicon gasket, housing locked with a grub screw, ceiling mount: 3 drilled holes \varnothing 5 mm on circular pitch \varnothing 84 mm, cable entry \varnothing 7-10 mm recessed or surface mounted cable, integral electronic ballast, supplied without lamp



HIT-TC-CE 20 W 1600 lm 8318142	\varnothing 2,17 m
	\varnothing 1,86 m
	\varnothing 1,55 m
	\varnothing 1,24 m
	\varnothing 0,93 m
Abstand/Distance	3 m 4 m 5 m 6 m 7 m
	493lk 277lk 178lk 123lk 91lk



HIT-TC-CE 20 W 1600 lm 8318142	\varnothing 2,17 m
	\varnothing 1,86 m
	\varnothing 1,55 m
	\varnothing 1,24 m
	\varnothing 0,93 m
Abstand/Distance	3 m 4 m 5 m 6 m 7 m
	493lk 277lk 178lk 123lk 91lk



HIT-TC-CE 35 W 3200 lm 8319142	\varnothing 2,48 m
	\varnothing 2,17 m
	\varnothing 1,86 m
	\varnothing 1,55 m
	\varnothing 1,24 m
Abstand/Distance	4 m 5 m 6 m 7 m 8 m
	555lk 355lk 247lk 181lk 139lk

Surface-mounted downlight 20 W, gimbal mounted, medium wide beam

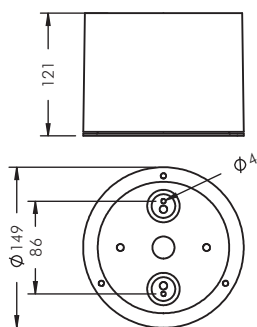
Part number	Colour	Lamp	Lampholder	Weight	Half beam angle γ
8 316 142 009	black	Philips CDM-Tm 20 W	PGJ5	2.1 kg	18°
8 316 162 009	white				
8 316 152 009	silver grey				

Part number	Colour	Lamp	Lampholder	Weight	Half beam angle γ
8 318 142 009	black	General Electric	GU6.5	2.1 kg	18°
8 318 162 009	white	CMH 20 W /			
8 318 152 009	silver grey	Osram HCI-TF 20 W			


Surface-mounted downlight 35 W, gimbal mounted, medium wide beam

Part number	Colour	Lamp	Lampholder	Weight	Half beam angle γ
8 319 142 009	black	General Electric	GU6.5	2.1 kg	18°
8 319 162 009	white	CMH 35 W /			
8 319 152 009	silver grey	Osram HCI-TF 35 W			





Surface-mounted LED downlight

With 5 x 3 W high performance LEDs, integral thermal monitoring system
 Protection class I, IP65 , IK08
 die cast aluminium housing, polyester powder coated, all exterior steel parts are stainless steel, tempered safety glass, silicon gasket, housing secured with a grub screw, ceiling mount: 2 drilled holes \varnothing 4 mm, spacing 86 mm, cable entry \varnothing 4-11 mm recessed cable, integral transformer and on-board driver

Surface-mounted LED downlight, narrow beam

Part number	Colour	Light source	Weight	Half beam angle γ
8 320 046 019	black	5 x LED 3 W warm white	2.3 kg	11°
8 320 066 019	white			
8 320 056 019	silver grey			

Part number	Colour	Light source	Weight	Half beam angle γ
8 320 045 019	black	5 x LED 3 W neutral white	2.3 kg	11°
8 320 065 019	white			
8 320 055 019	silver grey			

Surface-mounted LED downlight, linear beam spread

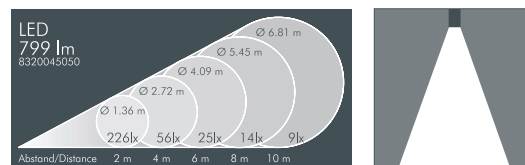
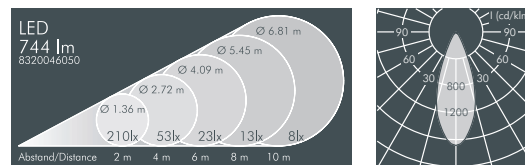
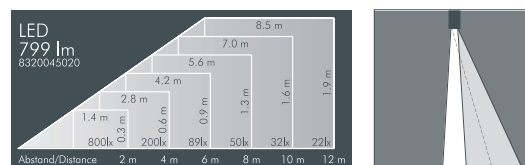
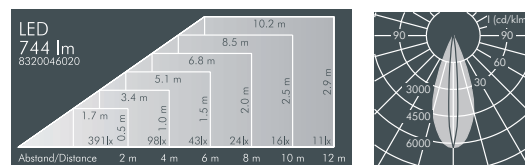
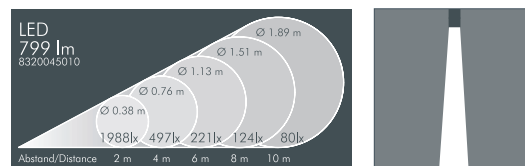
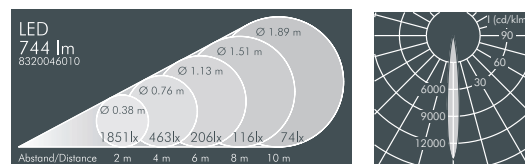
Part number	Colour	Light source	Weight	Half beam angle γ	
8 320 046 029	black	5 x LED 3 W warm white	2.3 kg	C 0 – 180	C 90 – 270
8 320 066 029	white			9°	38°
8 320 056 029	silver grey				

Part number	Colour	Light source	Weight	Half beam angle γ	
8 320 045 029	black	5 x LED 3 W neutral white	2.3 kg	C 0 – 180	C 90 – 270
8 320 065 029	white			9°	38°
8 320 055 029	silver grey				

Surface-mounted LED downlight, wide beam

Part number	Colour	Light source	Weight	Half beam angle γ
8 320 046 059	black	5 x LED 3 W warm white	2.3 kg	38°
8 320 066 059	white			
8 320 056 059	silver grey			

Part number	Colour	Light source	Weight	Half beam angle γ
8 320 045 059	black	5 x LED 3 W neutral white	2.3 kg	38°
8 320 065 059	white			
8 320 055 059	silver grey			




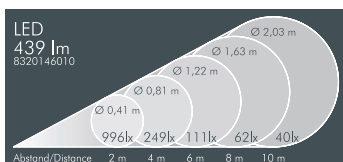
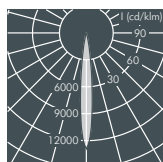
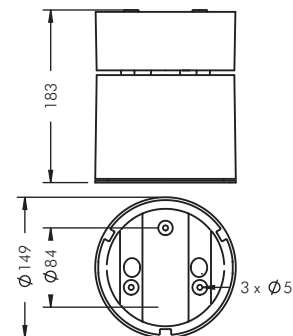
Light source

LEDs, replacement modules available



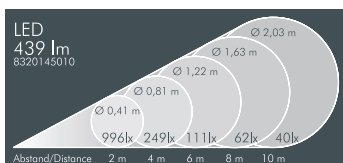
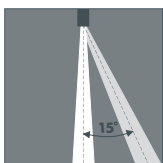
Surface-mounted LED downlight Gimbal mounted

With 5 x 1 W high performance LEDs,
integral thermal monitoring system,
Protection class I, IP65 , IK08
die cast aluminium housing, polyester powder
coated, gimbal mounted LED board, tilt range 0-15°,
all exterior steel parts are stainless steel,
tempered safety glass, silicon gasket,
housing secured with a grub screw,
ceiling mount: 3 drilled holes \varnothing 5 mm, on a circular
pitch \varnothing 84 mm, cable entry \varnothing 7-10 mm recessed or
surface mounted cable, integral transformer and
on-board driver

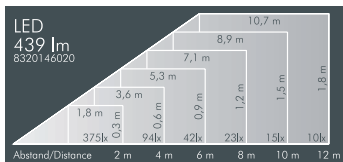
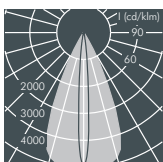


Surface-mounted LED downlight, gimbal mounted, narrow beam

Part number	Colour	Light source	Weight	Half beam angle γ
8 320 146 019	black	5 x LED 1 W warm white	2.1 kg	11°
8 320 166 019	white			
8 320 156 019	silver grey			

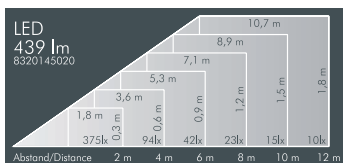
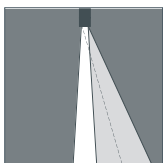


Part number	Colour	Light source	Weight	Half beam angle γ
8 320 145 019	black	5 x LED 1 W neutral white	2.1 kg	11°
8 320 165 019	white			
8 320 155 019	silver grey			

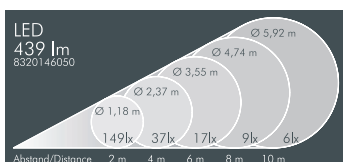
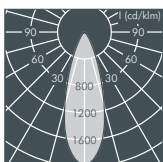


Surface-mounted LED downlight, gimbal mounted, linear beam spread

Part number	Colour	Light source	Weight	Half beam angle γ	
8 320 146 029	black	5 x LED 1 W warm white	2.1 kg	C 0 - 180	C 90 - 270
8 320 166 029	white			9°	48°
8 320 156 029	silver grey				

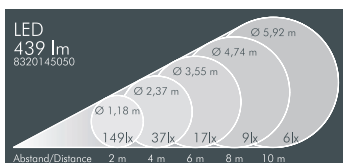
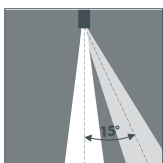


Part number	Colour	Light source	Weight	Half beam angle γ	
8 320 145 029	black	5 x LED 1 W neutral white	2.1 kg	C 0 - 180	C 90 - 270
8 320 165 029	white			9°	48°
8 320 155 029	silver grey				



Surface-mounted LED downlight, gimbal mounted, wide beam

Part number	Colour	Light source	Weight	Half beam angle γ
8 320 146 059	black	5 x LED 1 W warm white	2.1 kg	33°
8 320 166 059	white			
8 320 156 059	silver grey			



Part number	Colour	Light source	Weight	Half beam angle γ
8 320 145 059	black	5 x LED 1 W neutral white	2.1 kg	33°
8 320 165 059	white			
8 320 155 059	silver grey			

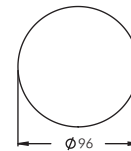
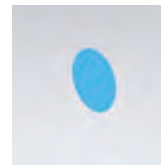
Light source

LEDs, replacement modules available

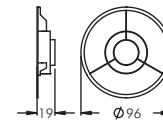


Accessories for surface-mounted downlights 20/35 W narrow, medium wide and wide beam

Part number	Colour	Description
123 0 311 000	yellow	Dichroic colour filters, internally fitted
123 0 313 000	blue	
123 0 317 000	red	
123 0 318 000	green	

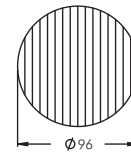


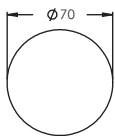
Part number	Description
123 0 320 940	Radial louvre, internally fitted, to reduce lateral glare



Accessories for surface-mounted downlights 20/35 W, narrow beam

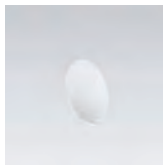
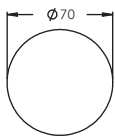
Part number	Description
123 0 312 000	Ribbed glass spreader lense, internally fitted, for linear beam control



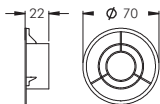


Accessories for surface-mounted downlights 20/35 W, gimbal mounted, narrow and wide beam

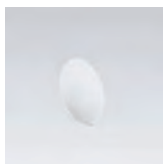
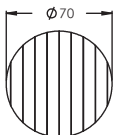
Part number	Colour	Description
123 0 301 000	yellow	Dichroic colour filters, internally fitted
123 0 303 000	blue	
123 0 307 000	red	
123 0 308 000	green	



Part number	Description
123 0 300 000	Prismatic glass lens, to widen the beam angle



Part number	Description
123 0 299 940	Radial louvre, internally fitted, to reduce lateral glare



Accessories for surface-mounted downlights, gimbal mounted, narrow beam

Part number	Description
123 0 302 000	Ribbed glass spreader lens, internally fitted, for linear beam control