

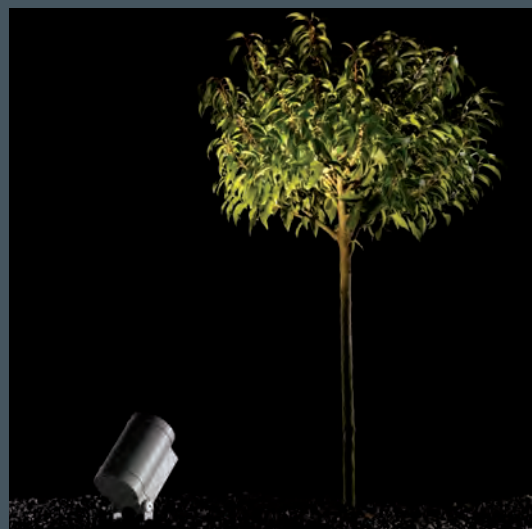


Design: Roy Fleetwood

Ecospot is a floodlight series which was designed specifically for LEDs. They offer extremely narrow beam light distribution with very little scattered light and a tightly bundled luminous flux. In this way high levels of illumination can be achieved even over greater distances. Longevity of the integrated components is ensured by highly efficient heat dissipation, despite the compact design of the luminaires.

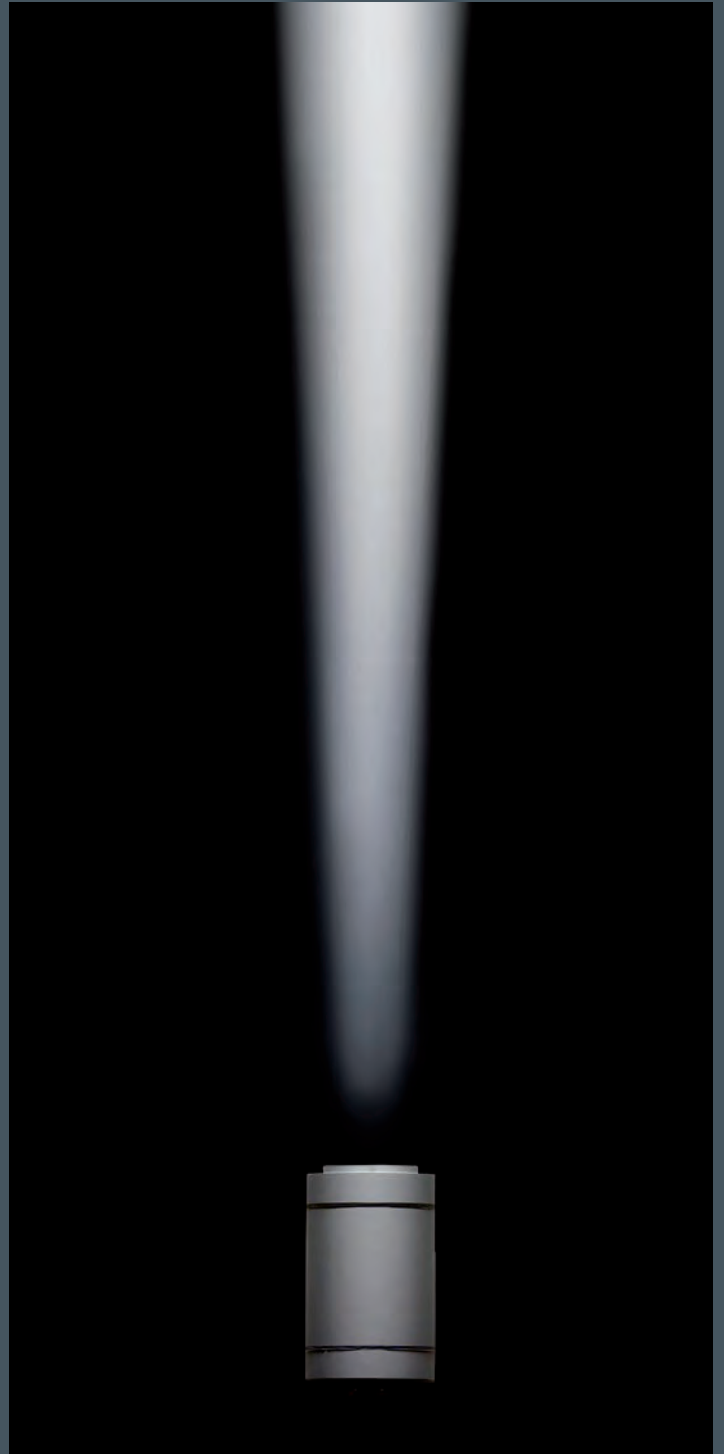
These floodlights are available in two sizes: Ecospot Mini for the highlighting of façade details and Ecospot for façade illumination over several stories.

Thanks to their precise optics and well-conceived design, Ecospot floodlights are sustainable and very economical tools for accent lighting.

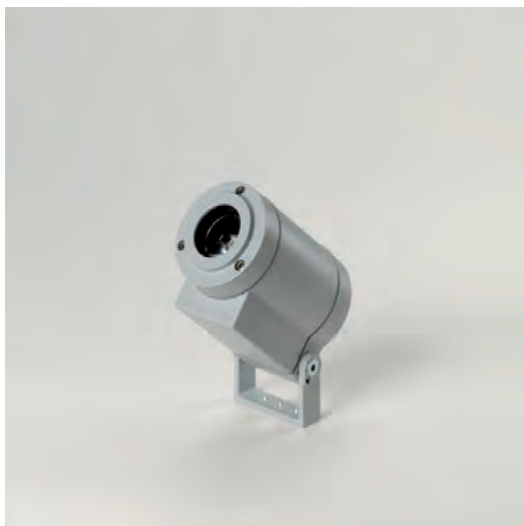
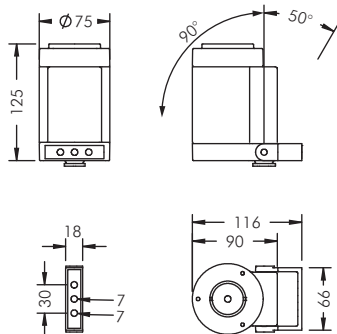


An earth spike is available when using these floodlights for landscape lighting.

The extremely narrow beam distribution of 4° or 6° makes it possible to achieve high levels of illumination even over longer distances.



A short wall arm is available as an accessory.



Ecospot Mini

With 1 x 3 W high performance LED, protection class I, IP65 $\diamond \blacktriangle \blacktriangle$, IK08 die cast aluminium housing, polyester powder coated, all exterior steel parts are stainless steel, tempered high transmission safety glass, silicon gasket, mounting bracket powder coated aluminium with tilt scale: 2 drilled holes $\varnothing 7$ mm, spacing 30 mm, 1 centre hole $\varnothing 7$ mm, tilt range 140°, M20 cable gland, integral converter

Ecospot Mini, narrow beam

Part number	Colour	Light source	Weight	Half beam angle γ
8 980 046 019	black	1 x LED 3 W warm white	0.8 kg	4°
8 980 066 019	white			
8 980 056 019	silver grey			

Part number	Colour	Light source	Weight	Half beam angle γ
8 980 045 019	black	1 x LED 3 W neutral white	0.8 kg	4°
8 980 065 019	white			
8 980 055 019	silver grey			

Ecospot Mini, linear beam spread, vertical

Part number	Colour	Light source	Weight	Half beam angle γ	
				C 0 - 180	C 90 - 270
8 980 046 029	black	1 x LED 3 W warm white	0.8 kg	24°	6°
8 980 066 029	white				
8 980 056 029	silver grey				

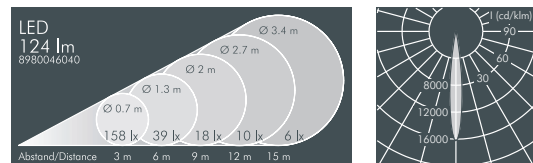
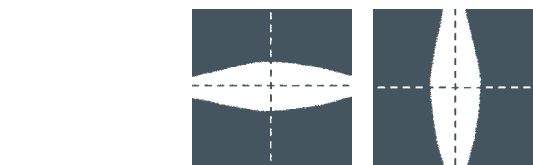
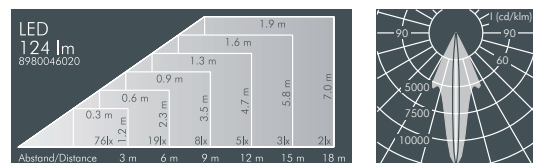
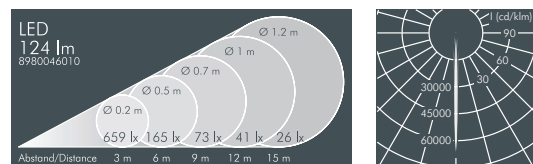
Part number	Colour	Light source	Weight	Half beam angle γ
8 980 045 029	black	1 x LED 3 W neutral white	0.8 kg	24°
8 980 065 029	white			6°
8 980 055 029	silver grey			

Part number	Description
... 039	Luminaire with linear beam spread, horizontal

Ecospot Mini, medium wide beam

Part number	Colour	Light source	Weight	Half beam angle γ
8 980 046 049	black	1 x LED 3 W warm white	0.8 kg	13°
8 980 066 049	white			
8 980 056 049	silver grey			

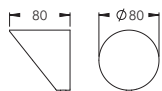
Part number	Colour	Light source	Weight	Half beam angle γ
8 980 045 049	black	1 x LED 3 W neutral white	0.8 kg	13°
8 980 065 049	white			
8 980 055 049	silver grey			



Light source

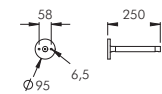
LEDs, replacement modules available



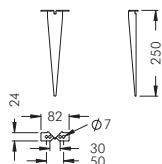


Accessories for Ecospot Mini

Part number	Colour	Description
129 0 498 940	black	Cowl
129 0 498 960	white	
129 0 498 950	silver grey	



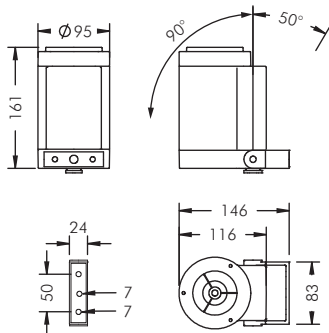
Part number	Colour	Description
129 0 500 940	black	Wall arm
129 0 500 960	white	
129 0 500 950	silver grey	



Part number	Colour	Description
129 0 502 940	black	Stainless steel earth spike
129 0 502 960	white	
129 0 502 950	silver grey	



The anti-reflective safety glass has a very high transmission value; this optimises the efficiency of the luminaire.

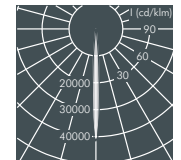
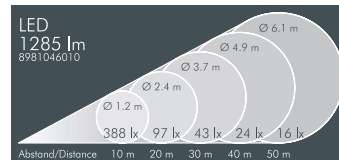


Ecospot

With 1 x high performance LED module, protection class I, IP65 $\diamond \blacktriangle \blacktriangle$, IK08 die cast aluminium housing, polyester powder coated, rotationally symmetrical aluminium reflector, radial louvre, all exterior steel parts are stainless steel, tempered high transmission safety glass, silicon gasket, mounting bracket powder coated aluminium with tilt scale:
 2 drilled holes $\varnothing 7$ mm, spacing 50 mm,
 1 centre hole $\varnothing 7$ mm, tilt range 140° ,
 M 20 cable gland, integral converter

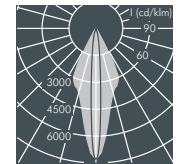
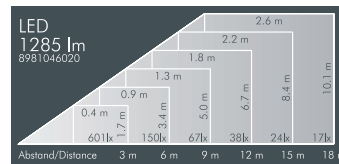
Ecospot, narrow beam

Part number	Colour	Light source	Weight	Half beam angle γ
8 981 046 019	black	1 x LED 19 W warm white	1.4 kg	6°
8 981 066 019	white			
8 981 056 019	silver grey			

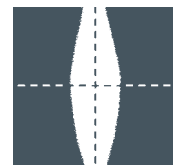
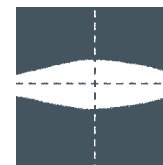


Ecospot, linear beam spread, vertical

Part number	Colour	Light source	Weight	Half beam angle γ	
				C 0 - 180	C 90 - 270
8 981 046 029	black	1 x LED 19 W warm white	1.4 kg	32°	9°
8 981 066 029	white				
8 981 056 029	silver grey				

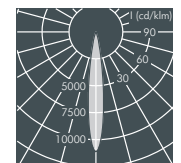
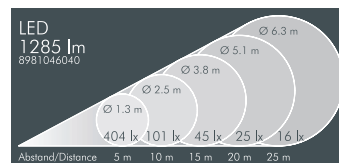


Part number	Description
... .. 039	Luminaire with linear beam spread, horizontal



Ecospot, medium wide beam

Part number	Colour	Light source	Weight	Half beam angle γ
8 981 046 049	black	1 x LED 19 W warm white	1.4 kg	15°
8 981 066 049	white			
8 981 056 049	silver grey			



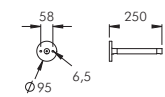
Light source

LEDs, replacement modules available

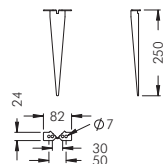




Accessories for Ecospot		
Part number	Colour	Description
129 0 499 940	black	Cowl
129 0 499 960	white	
129 0 499 950	silver grey	



Part number	Colour	Description
129 0 500 940	black	Wall arm
129 0 500 960	white	
129 0 500 950	silver grey	



Part number	Colour	Description
129 0 502 940	black	Stainless steel earth spike
129 0 502 960	white	
129 0 502 950	silver grey	



The anti-reflective safety glass has excellent transmission properties.